

ANNOUNCING THE NEW WESTWOOD!

# THE WESTWOOD

2441/2443 Warrenville Road | Lisle IL 60532

**CBRE**



**FULLY RENOVATED  
WITH TOP OF  
CLASS AMENITIES**

2,000-140,000 SF contiguous

**I-88 Signage Available**



## PROPERTY HIGHLIGHTS

- New Lobbies
- Outstanding Fitness Facility
- Multiple tenant lounges
- New Building Deli
- First class conferencing
- Secured heated parking
- Onsite mgmt. and security
- Tollway Signage
- WELL Certified



## AMENITIES @ THE WESTWOOD

---

### 2441 WARRENVILLE ROAD:

#### **UPTOWN LOUNGE**

New Café that offers modern/contemporary seating to enjoy breakfast /lunch or a lounge to simply collaborate w coworkers

#### **CONFERENCE CENTER**

Newly constructed conference facility with state of the art technology

### 2443 WARRENVILLE ROAD:

#### **DOWNTOWN LOUNGE**

Enjoy fireside seating to relax or meet with others

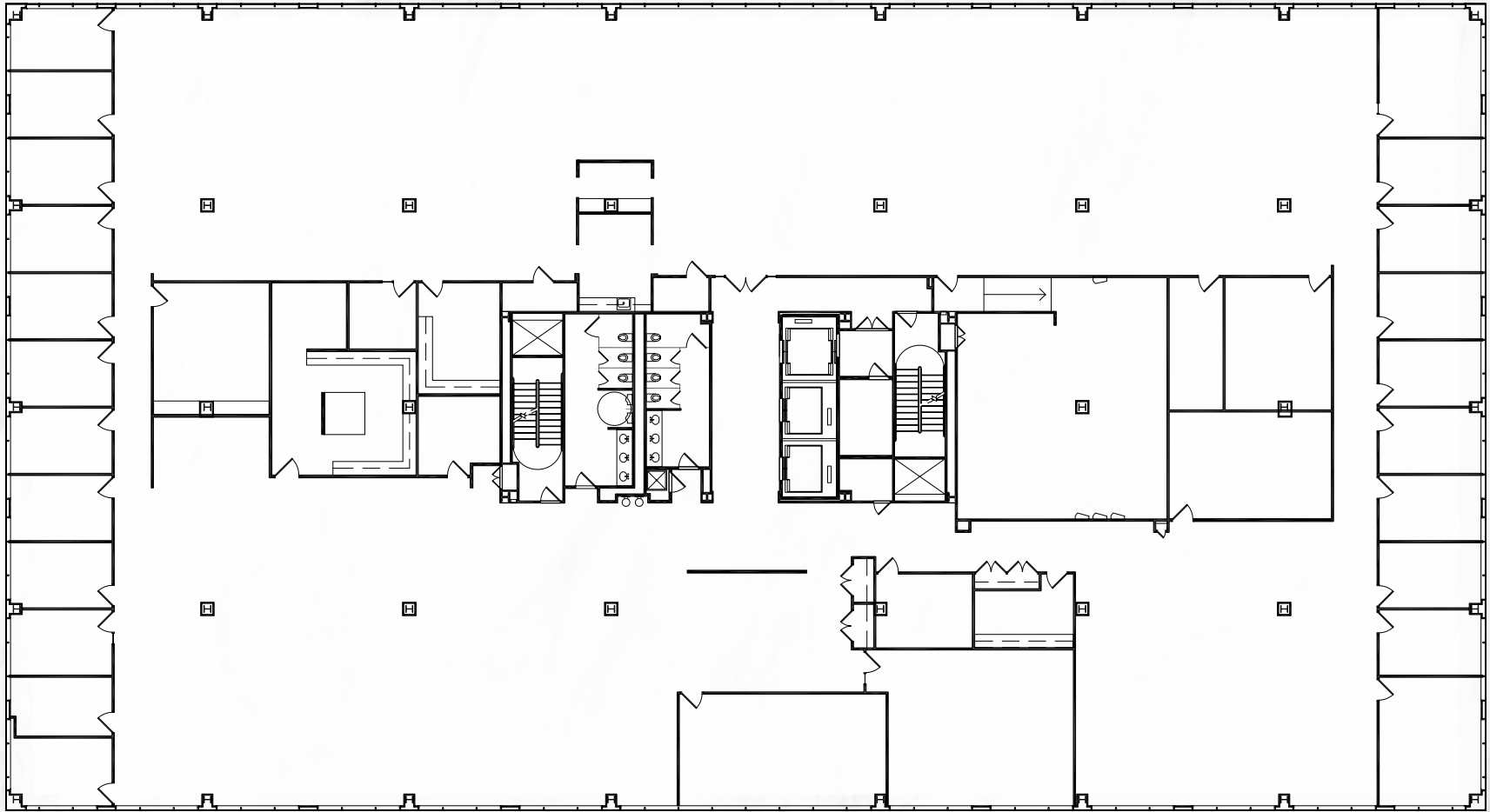
#### **FITNESS CENTER**

Top of class fitness facility with high end equipment and locker rooms

#### **COFFEE KIOSK**

Coffee Kiosk in new lobby for convenient grab and go





2441 Warrenville Road

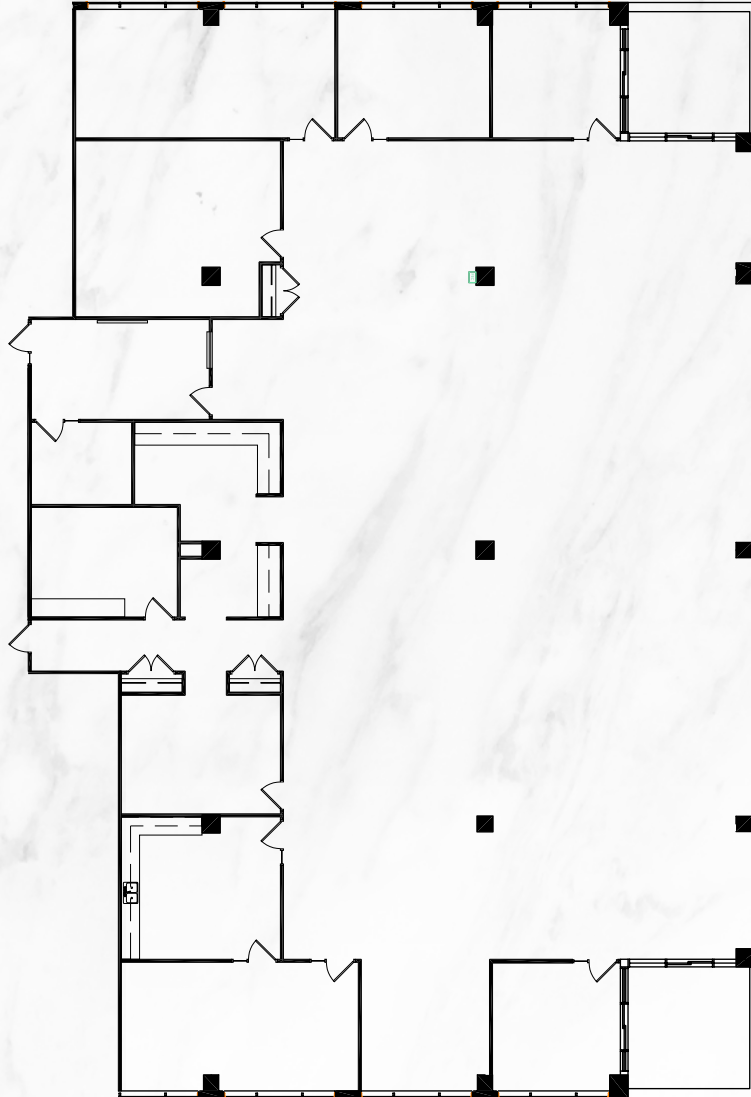
---

**SUITE 400**  
**28,802 RSF**

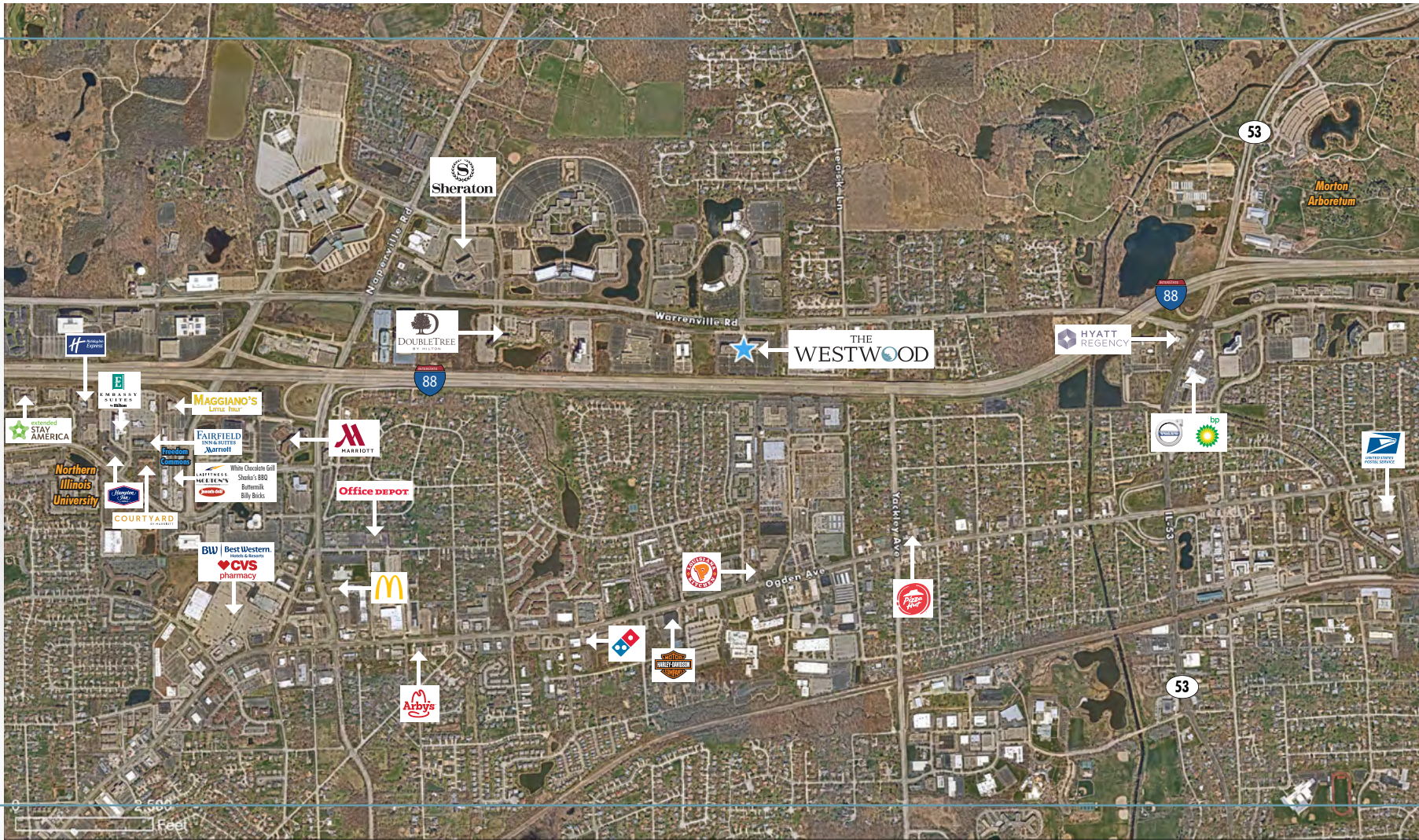
**ADDITIONAL SUITES ARE ALSO AVAILABLE FOR LEASE**

2443 Warrentville Road

**SUITE 500**  
**10,374 RSF**



# AREA MAP



## FOR MORE INFORMATION

**PETE ADAMO**  
 +1 630 573 7053  
 peter.adamo@cbre.com

**BILL ELWOOD**  
 +1 630 573 7033  
 william.elwood@cbre.com

**ADAM J. LAWLER**  
 +1 630 368 2610  
 adam.lawler@cbre.com

