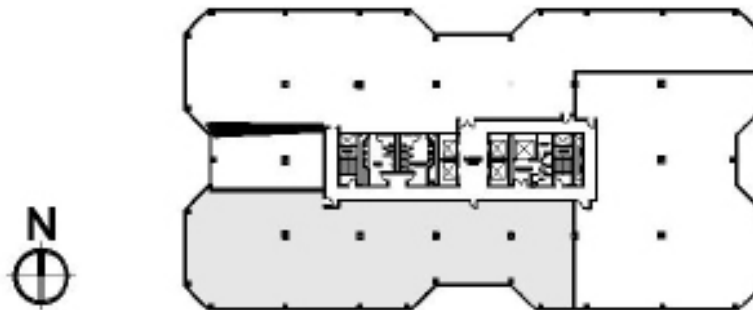
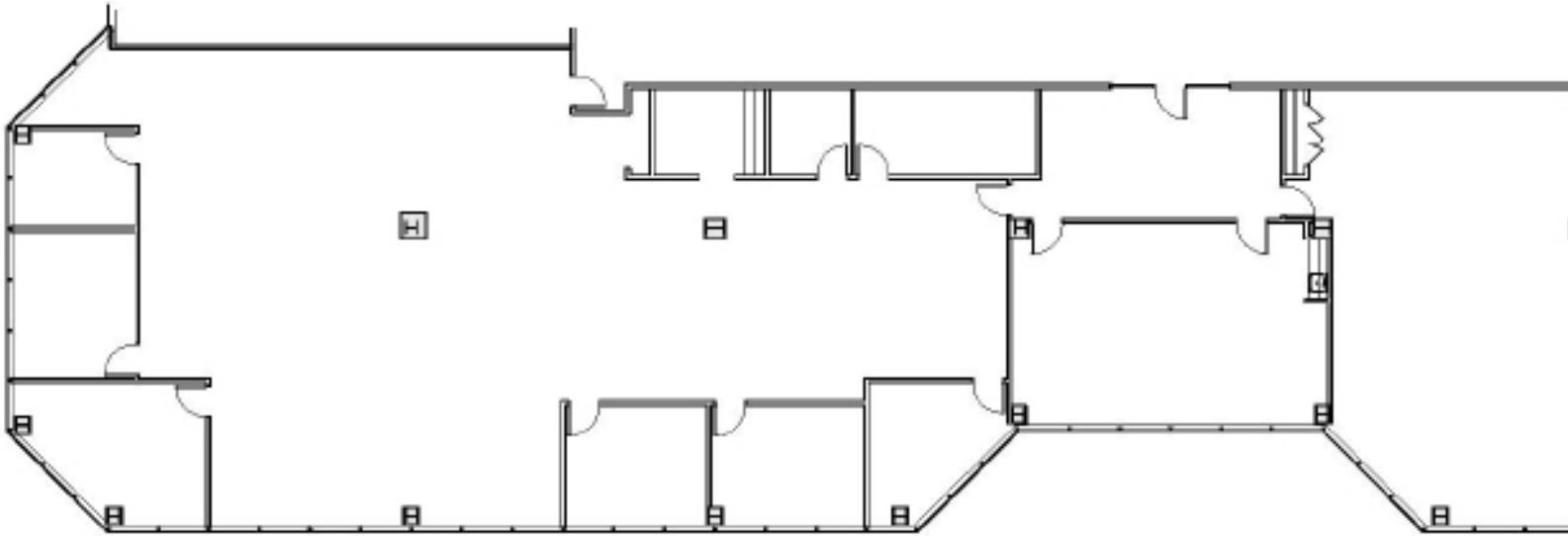


COLUMBIA CENTRE III - 9525 W BRYN MAWR AVE, ROSEMONT, ILLINOIS

Suite 800 - 9,562 RSF



FOR LEASING CONTACT:

DANIEL SVACHULA

847.518.3256

daniel.svachula@cushwake.com

ALLYSON BIRCHMEIER

847.720.1315

allyson.birchmeier@cushwake.com

CUSHMAN & WAKEFIELD

9500 W. Bryn Mawr Ave.

Suite 600

Rosemont, Illinois 60018

